

ARE YOU ONLY ABLE TO ACCESS TAFE WEBSITES WHEN ON-CAMPUS?

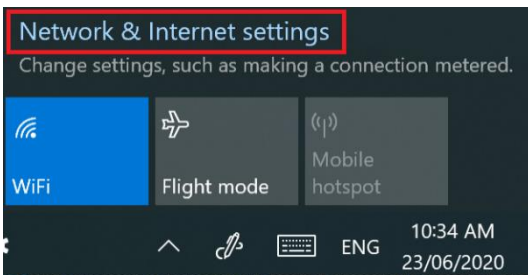
NO ACCESS AT OFF-CAMPUS e.g. HOME?

You need to turn proxy settings on and off when going between these locations.

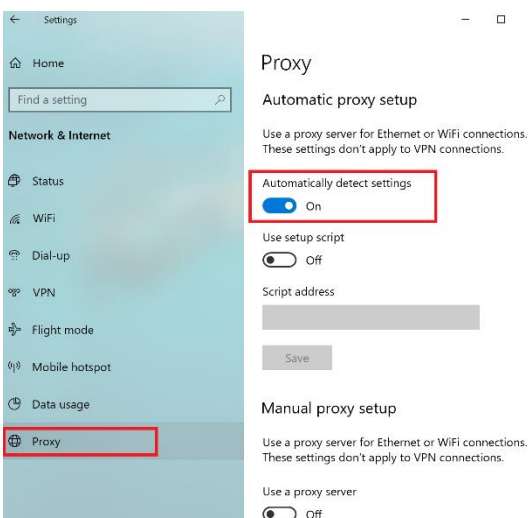
1. Click on the **Network Connection icon** in the bottom right hand corner.



2. Click on **Network & Internet settings**



3. Click on **Proxy**, turn *Off* **Automatically detect settings**



4. Under **Manual proxy setup**, turn *on* **Use a proxy server**

5. Type in the

Address **proxy.tafensw.edu.au**
Port **8080**

Manual proxy setup

Use a proxy server for Ethernet or Wi-Fi connections. These settings don't apply to VPN connections.

Use a proxy server On

Address	Port
proxy.tafensw.edu.au	8080

Use the proxy server except for addresses that start with the following entries. Use semicolons (;) to separate entries.

Don't use the proxy server for local (intranet) addresses

Save

6. Click **Save** button

Off-Campus

Follow the steps above except at;

Step 3 – turn **on** **Automatically Detect Settings**

Proxy

Automatic proxy setup

Use a proxy server for Ethernet or Wi-Fi connections. These settings don't apply to VPN connections.

Automatically detect settings On

Use setup script Off

Step 4 – turn **off** **Manual Proxy setup**

Manual proxy setup

Use a proxy server for Ethernet or Wi-Fi connections. These settings don't apply to VPN connections.

Use a proxy server Off