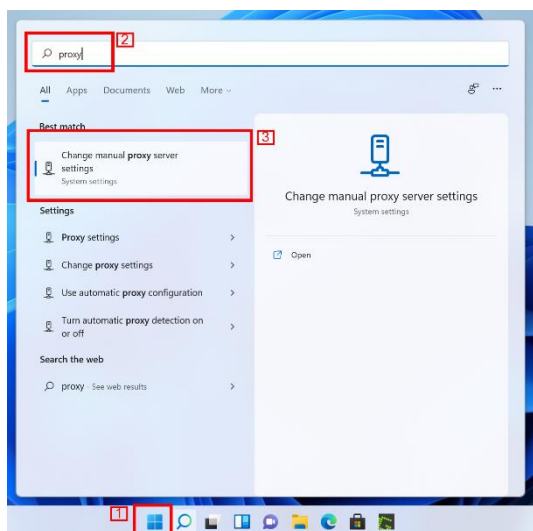


ARE YOU ONLY ABLE TO ACCESS TAFE WEBSITES WHEN ON-CAMPUS?

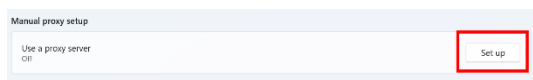
NO ACCESS AT OFF-CAMPUS e.g. HOME?

You need to turn proxy settings on and off when going between these locations.

1. Go to the Start menu
2. Type the word **proxy** in the search box
3. Select **Change manual proxy server settings**

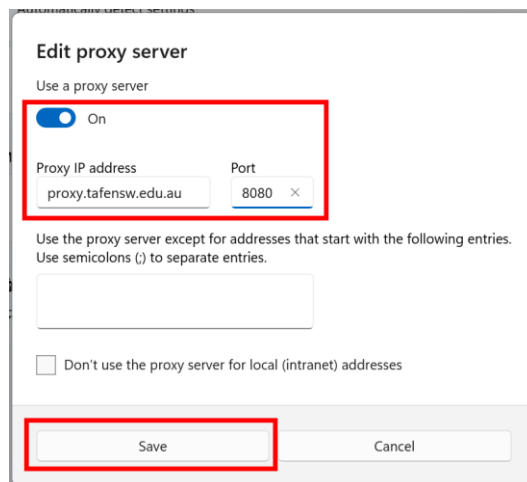


4. Select **Set up** to **Use a proxy server**



5. Type in

Proxy IP Address **proxy.tafensw.edu.au**
 Port **8080**



6. Click **Save** button

Off-Campus

Follow the steps above except

Turn *on* Automatically Detect Settings

Turn *off* use a proxy server